



Mohanlal Sukhadia University

मोहनलाल सुखाड़िया विश्वविद्यालय, उदयपुर, 313001

NAAC-SSR (Assessment Year: 2017-22)

Criterion- 2

Teaching-learning and Evaluation

Key Indicator 2.2:

Catering to Student Diversity

Metric 2.2.1:

The institution assesses the learning levels of the students and organises special Programmes to cater to differential learning needs of the student

Photographs of various activities for differential learning needs



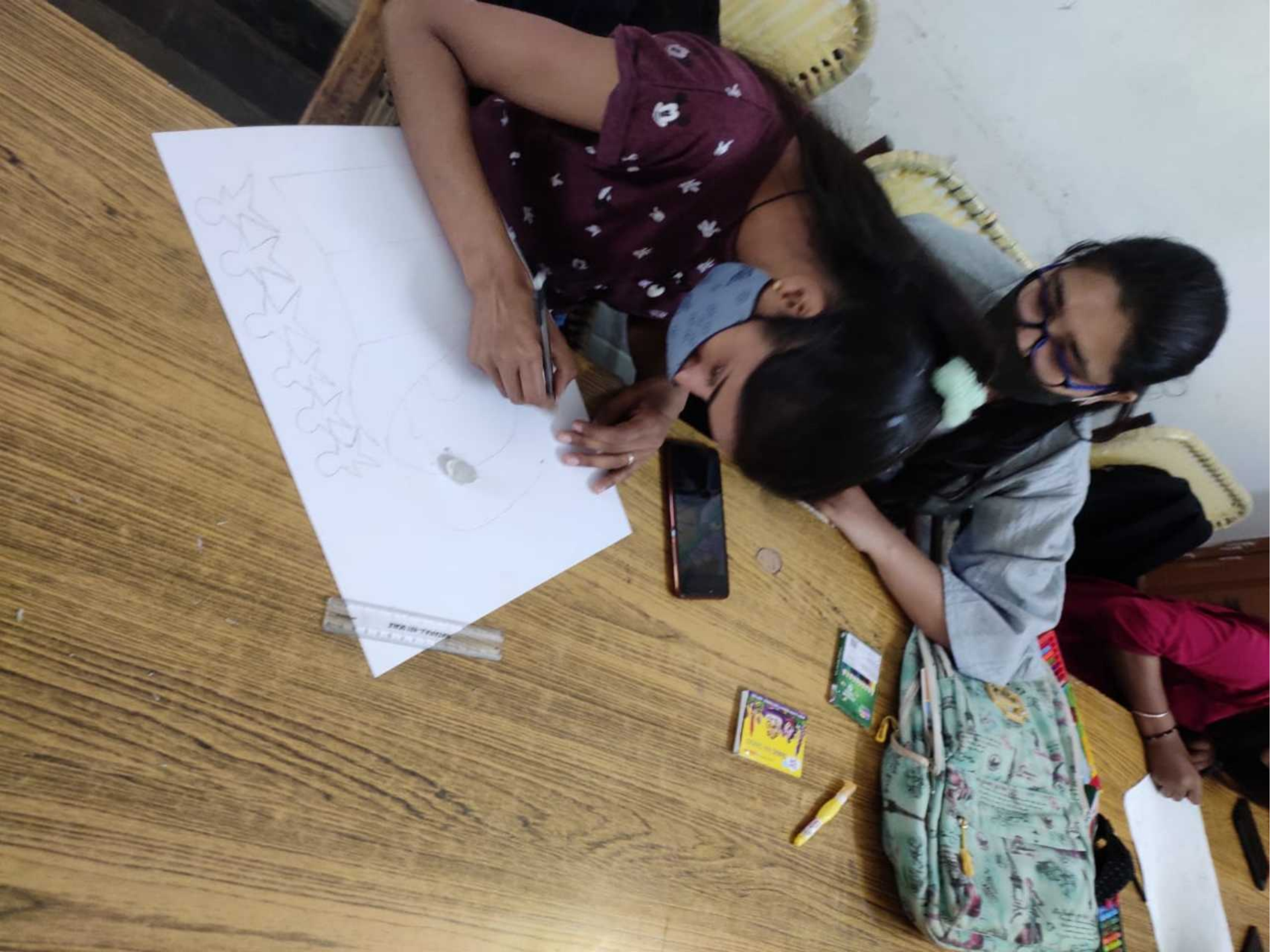




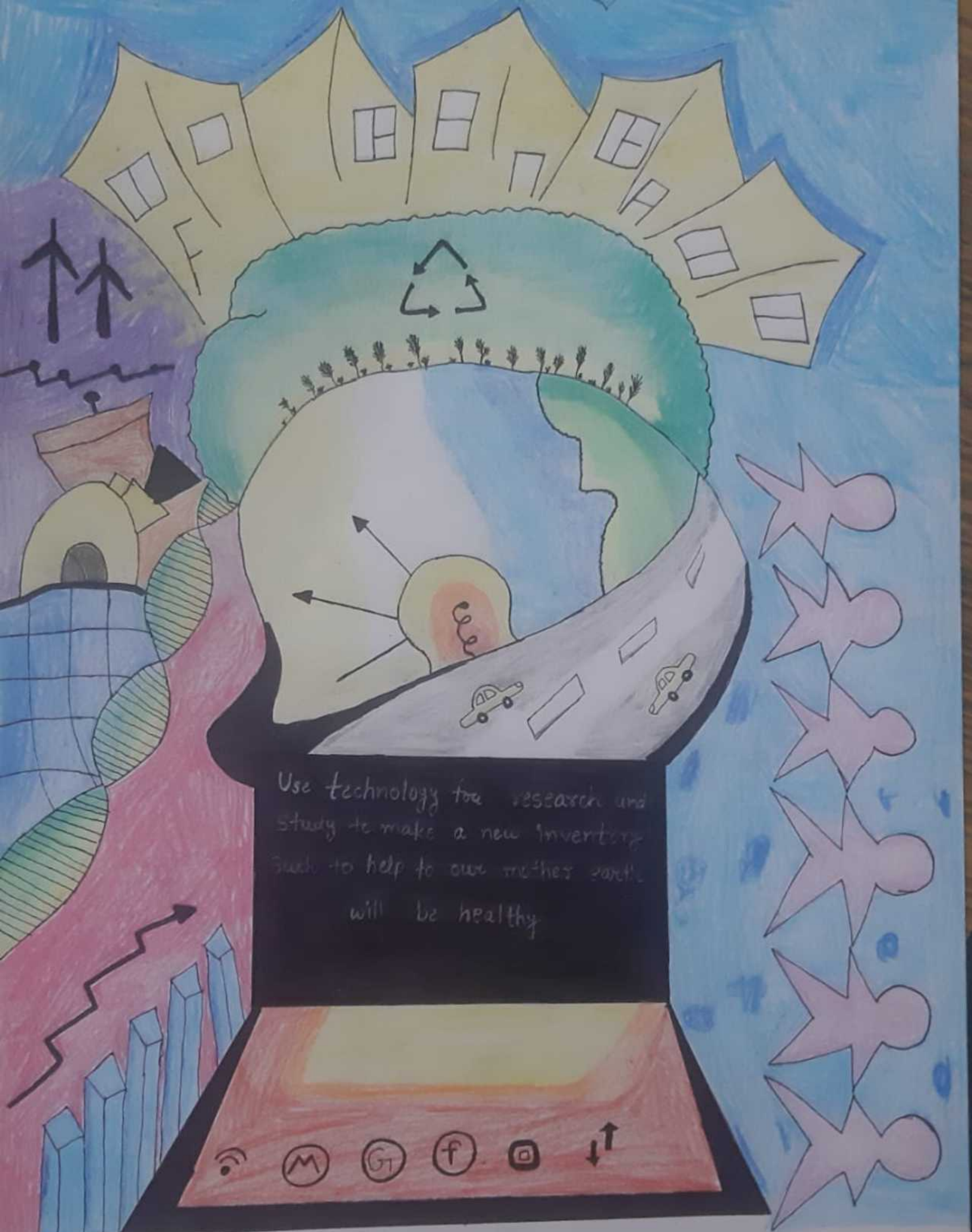












Use technology for research and study to make a new invention such to help to our mother earth will be healthy

